



wne  
PARIS



4-6  
NOV  
2025

# "BEYOND ELECTRICITY, THE EXPO"

B·E·E·  
BY wne  
PARIS

WNE 2025 will expand its focus beyond electricity to showcase the groundbreaking applications of nuclear technology in three specific markets: **Medicine, Agriculture, Space, Hydrogen, Heat, Desalination, Propulsion...**

# WORLD NUCLEAR EXHIBITION IN A NUTSHELL

04-06 November 2025 | Paris, France

**WNE** is the world's leading civil nuclear exhibition, connecting you with the world's most comprehensive and diverse range of industry players, from private buyers to public operators.

## KEY FIGURES\*

**780**

Exhibitors

**8,800**

Business Meetings

**+23,000**

Professional Participants

**1,400**

VIP & Officials

**88**

Countries represented

**40%**

International Exhibitors from Germany, Italy, Poland, UK, USA, South Korea, Czech Republic, Belgium, Canada and Spain

**17**

International Pavilions

**25%**

International Visitors from UK, Germany, Belgium, Italy, USA, South Korea, Poland, Canada, China and Switzerland

\* All figures refer to the 2023 edition.



# Beyond Electricity

## Expo "BEE"

The “Beyond Electricity Expo, BEE” will showcase the key role of nuclear technology across **various industries**:



**Medicine:** it is vital, particularly through medical imaging and radiation therapy. It enables accurate diagnostics and effective treatment of diseases, such as cancer, improving patient outcomes and enhancing overall healthcare quality.



**Agriculture:** enhances through irradiation, which extends shelf life, reduces foodborne illnesses, and ensures safety while preserving nutritional value. This method is vital for improving food security and meeting global demand.



**Space:** provides reliable power sources for spacecraft and enables long-duration missions. It enhances propulsion systems and supports scientific instruments, allowing for deeper space exploration and extended missions beyond Earth.





# Beyond Electricity

## Expo "BEE"



**Hydrogen:** supports hydrogen production through high-temperature electrolysis, providing a clean and efficient method to split water into hydrogen and oxygen. This emission-free process can meet increasing energy demands while reducing reliance on fossil fuels, making hydrogen a key player in the transition to sustainable energy.



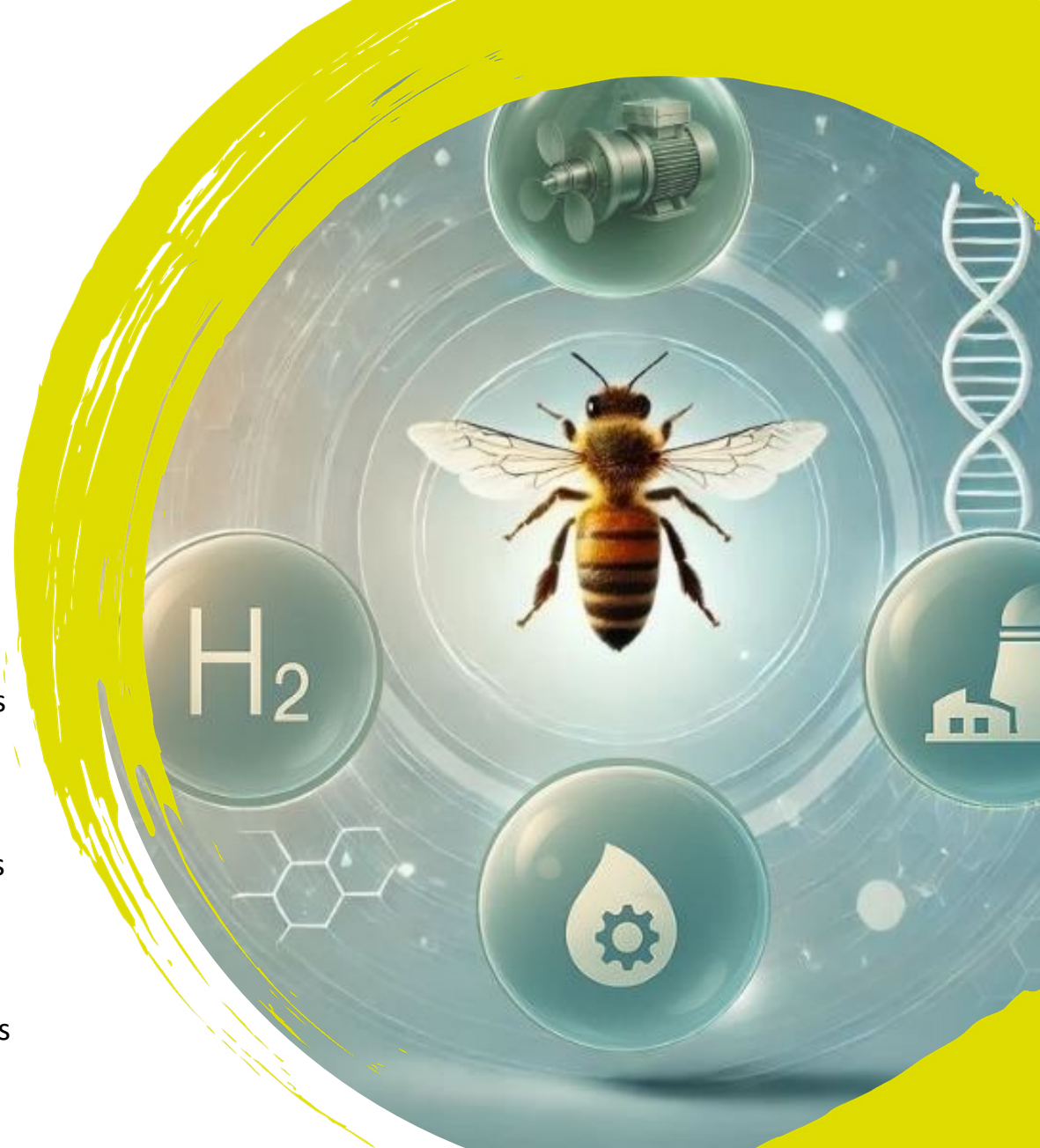
**Heat:** nuclear reactors offer a stable and efficient source of high-temperature heat for industrial processes such as refining, chemical manufacturing, and district heating. This reduces reliance on fossil fuels and supports the transition to low-carbon industrial energy systems.



**Desalination:** powers large-scale desalination plants, using its heat and energy to convert seawater into fresh, drinkable water. This approach is cost-effective and scalable, supporting water security in arid regions and addressing the global scarcity of freshwater resources.



**Propulsion:** provides unmatched efficiency for civilian vessels. It powers icebreakers and similar ships for extended operations in remote regions, eliminating the need for frequent refueling. This technology supports sustainable, low-carbon transportation.



# Discover “BEE”

This prominent exhibition area, **BEE**, will be located at the entrance of the show.

Built as an **immersive experience**, BEE will demonstrate the vast opportunities that the nuclear industry offers, extending far beyond traditional energy production. It aims to attract diverse pools of players and broaden the WNE ecosystem.

An **interactive and engaging format** inviting the attendees to discover, learn, and connect with the innovations that are impacting our lives and shaping our future.

As part of the press and official tours, it will be one of the big **highlights of the WNE 2025 edition**, an opportunity to offer them a comprehensive understanding of the nuclear industry's potential.





# A global **collaboration**

**CEA & IAEA** are official partners of this exciting initiative, providing valuable support and knowledge content.

Their expertise enhances the mission to showcase the **limitless potential of nuclear innovation**, reinforcing a commitment to advancing groundbreaking ideas in the field.



**BEE**

**Location**



Indicative plan

# Become sponsor of BEE and position your company as **a comprehensive player in the nuclear sector.**

Seize the opportunity to **position your company as a leader** in the nuclear industry by sponsoring one of the key applications market, value your expertise, and let your brand shine.

As a sponsor, your company will gain **exceptional visibility** and be prominently featured in discussions surrounding your selected application. When we highlight innovations in that sector, **your brand will be at the forefront.**

In addition, you will have the possibility to **contribute to the expo (content & demo if applicable)**, demonstrating the potential of your expertise and achievements in the chosen market.





# A solid branding & visibility included in the sponsoring package.

## BEFORE WNE

### Digital:

- Your logo on the **WNE website**, on the "BEE" section
- Your logo on the **WNE newsletters** announcing "BEE", sent to the WNE database (30k contacts)
- Your logo in 1 **carousel post dedicated to the application market** of your choice on WNE social media

## DURING WNE

### Visibility & branding:

- Your logo embedded on the **Beyond Electricity Expo onsite signage**
- Your logo on the **thanking image** for sponsors located at the entrance of the show (Medicine / Agriculture / Space)
- Your logo on the **floorplan and the pocket plan**

### Content:

- Your name in a **dedicated article on "BEE"** in the WNE Daily
- A mention of your company in a post on WNE social media

## AFTER WNE

### Digital:

- Your logo on the **WNE website** until the show +3 months after the show

### Content:

- Mention of your presence in the **WNE wrap-up** sent to all participants and available on the WNE website for one year

# A compact package to maximize your ROI and your brand awareness.

**Branding &  
visibility**

**Demo &  
Content**

**Highlight of  
WNE 2025**





## Your Contacts

### Guillaume Lamoureux

Key Account Director

+33 (0)6 13 82 24 07

[guillaume.lamoureux@rxglobal.com](mailto:guillaume.lamoureux@rxglobal.com)

### Hélène Salaün

International Sales Manager

+33 (0)1 47 56 67 02

[helene.salaun@rxglobal.com](mailto:helene.salaun@rxglobal.com)

### Morgan Schmidt

Sales Manager

+33 (0)6 63 34 96 31

[morgan.schmidt@rxglobal.com](mailto:morgan.schmidt@rxglobal.com)